

+7 (351) 700-13-80

+7 (351) 700-13-79

454091, Russian Federation,  
Chelyabinsk, 25 Tsvillinga Street

sales@molnija.shop  
www.molnija-ltd.ru  
www.molnija.shop

**Молния**

**Молния**



ETUDE



## Technical characteristics:

- HOUR, MINUTE, AND SUBSIDIARY SECOND HANDS
- 3603 MANUALLY WOUND IN-HOUSE MOVEMENT
- 18 JEWELS
- 40 HOURS OF POWER RESERVE
- STAINLESS STEEL CASE
- 46 MM CASE
- SAPPHIRE CRYSTAL

## ETUDE WRIST WATCH

We would like to congratulate you on your purchase of the Etude wrist watch. We sincerely hope that you will be satisfied with the superior craftsmanship and reliability of our pieces, as well as with their elegant designs.

We at “Molnija” aim not only to provide you with outstanding product, but a high level of customer service as well. We are striving to consistently improve our services as a company. Your opinion is highly valuable to us and we welcome any questions or comments.

We hope that our product is deserving of your time and greatly value your continued business.

[www.molnija.shop](http://www.molnija.shop)

The “Molnija” (Lightning) watchmaking company was founded in 1947 and to this day continues to bring together the best watchmakers throughout Russia. The company is centered upon a commitment to producing watches and calibers of the highest precision. Our watches are the symbol of reliability, accuracy, and an unshakeable reputation. Our chronographs are designed for aeronautical application, stand up to extreme temperatures and pressure, and for decades have served as a crucial link in Russian aviation.

The historical roots of the company reach back into the 19th century and trace back to the legendary American watchmaking firm Dueber-Hampden. Dueber-Hampden was founded in 1877 through a merger with the Wright Brothers’ factory, the very brothers heralded as the inventors of modern aviation. Dueber-Hampden existed for more than 40 years and to this day continues to be recognized as a symbol of American precision engineering and watchmaking. The company was a major player in the growing American economy and has made its mark in history as the largest American watchmaker.



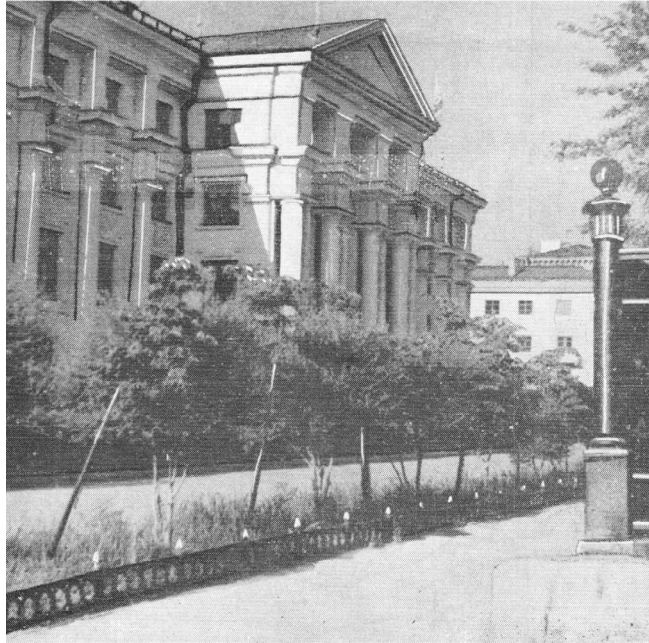
The Etude is based on caliber 3603, a classic movement first produced by the Molnija factory in 1984.

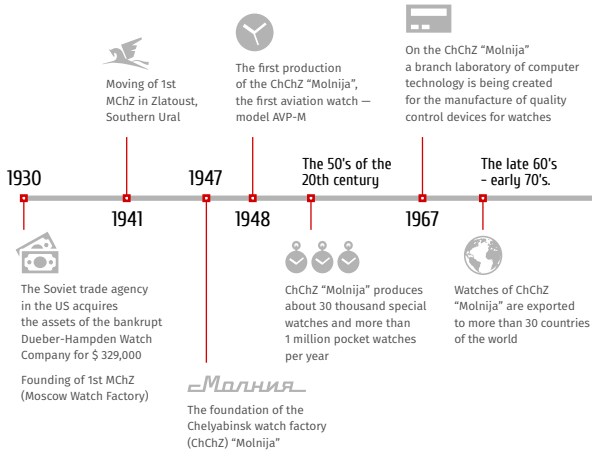
---

The 3603 is a true classic of “Molnija”, and is among the best movements ever produced in Russia. The 3603 drew inspiration and perfected the caliber of the legendary brand Cortebert, renowned for its use in many deluxe watchmaking firms.

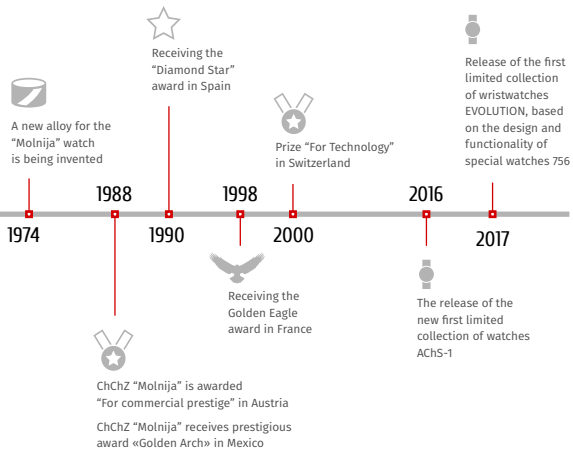
The Etude wristwatch case is made of stainless steel and is inspired by the graceful lines of classical musical instruments. There are two models in the collection: the first one with large Roman numerals, radially brushed dial and hands with luminous material. The second model is radially brushed dial, Arabic numerals and laconic indices.

Each model is presented in three classic colors. No unnecessary details and precision in every movement of the hands.





We continue to carry out this legacy even today. Our cases and mechanical components (including balance wheels and springs) are produced in-house. We also do finishing, painting, case plating, dial printing, assembling, and carry out quality assurance. We continue to develop, test and launch production of new calibers, a major move for the company was the relaunch of the 3603 in-house caliber.





Although the great depression led to the end of production in the USA, due to an agreement between the USSR and the United States this one of a kind technology was purchased, shipped, and put back into production on the First and Second Watchmaking Factories in Moscow.

During the Second World War the First Watchmaking Factory was evacuated from Moscow to the Urals, and in 1947 resumed production as the firm "Molnija". By the end of the 1940s the firm was producing aeronautical timepieces and chronographs for the defense industry. The production of these timepieces has become the main task of the factory ever since. The history of the firm is deeply intertwined with the history of Russian aviation. First appearing in the cockpit of the legendary MIG-15 jet fighter, our timepieces quickly confirmed their reputation for quality, and by the 10th year of production the factory was producing over 30 thousand specialized watches, and our first aviator's watch became widely known.

In addition to specialized production, the factory also perfected timepieces for the civilian sector, such as pocket watches and interior clocks. It was these models that allowed our company to become one of the most famous in Russia, as well as in the USA, Germany, Turkey, Austria, and even Switzerland.